

Braindump2go Microsoft 70-411 Practice Tests Latest Questions Free Share(21-30)

QUESTION 21 Your network contains a single Active Directory domain named contoso.com. The domain contains a domain controller named DC1 that hosts the primary DNS zone for contoso.com. All servers dynamically register their host names. You install the new Web servers that host identical copies of your company's intranet website. The servers are configured as shown in the following table.

Server name	IP address
WEB1.contoso.com	10.0.0.20
WEB2.contoso.com	10.0.0.21
WEB3.contoso.com	10.0.0.22

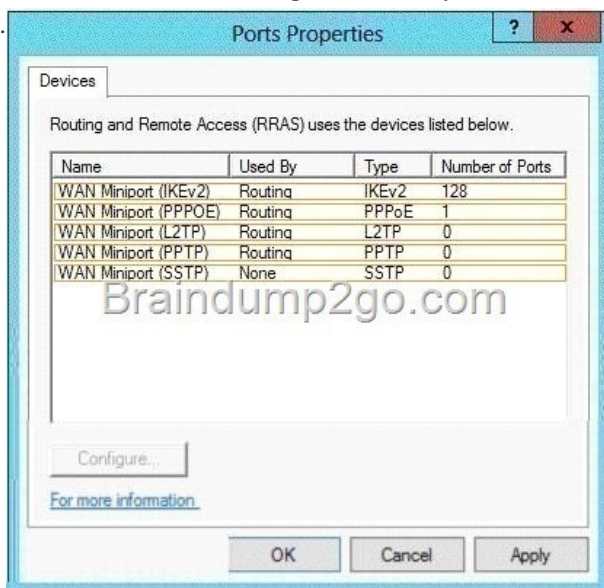
You need to use DNS records to load balance name resolution queries for intranet.contoso.com between the two Web servers. What is the minimum number of DNS records that you should create manually? A. 1 B. 2 C. 3 D. 4 Answer: B Explanation: An A records for each IP is needed intranet.contoso.com > 10.0.0.20 intranet.contoso.com > 10.0.0.21 intranet.contoso.com > 10.0.0.22

<http://technet.microsoft.com/en-us/library/cc772506.aspx> <http://technet.microsoft.com/en-us/library/gg398251.aspx> QUESTION 22

You have a Direct Access Server named Server1 running Server 2012 R2. You need to add prevent users from accessing websites from an Internet connection. What should you configure? A. Split Tunneling B. Security Groups C. Force Tunneling D. Network Settings Answer: C Explanation: To make Internet resources available to DirectAccess clients that use force tunneling, you can use a proxy server, which can receive IPv6-based requests for Internet resources and translate them to requests for IPv4-based Internet resources.

http://technet.microsoft.com/en-us/library/jj134204.aspx#BKMK_forcetunnel <http://blogs.technet.com/b/tomshinder/archive/2010/03/30/more-on-directaccess-split-tunneling-and-force-tunneling.aspx>

QUESTION 23 You have a server named Server1 that runs Windows Server 2012 R2. Server1 has the Remote Access server role installed. You need to configure the ports on Server1 to ensure that client computers can establish VPN connections to Server1. The solution must NOT require the use of certificates or pre-shared keys. What should you modify? To answer, select the appropriate object in the answer area.



Answer:



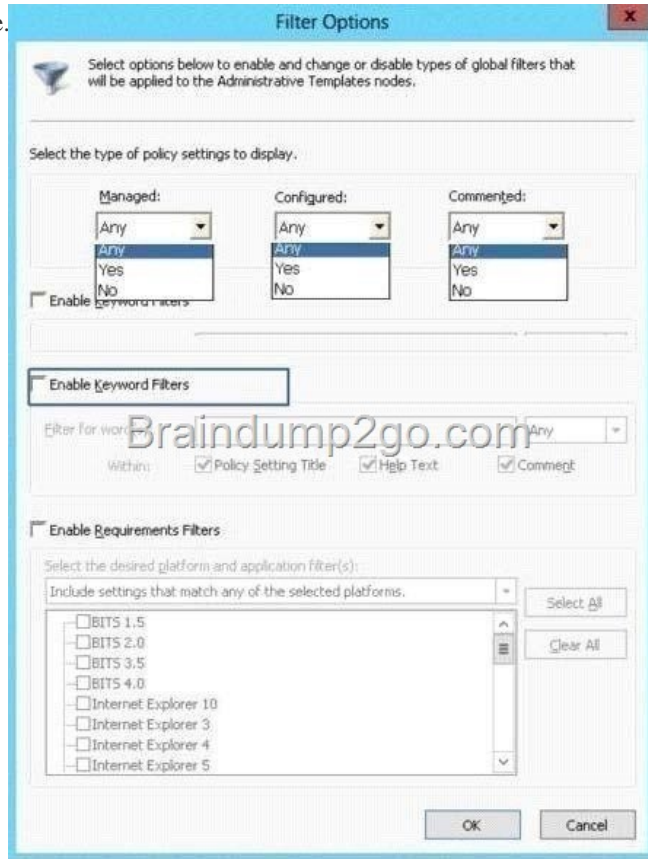
Explanation: PPTP <http://support.microsoft.com/kb/243374> QUESTION 24 Your network contains an Active Directory domain named contoso.com. The functional level of the forest is Windows Server 2008 R2. Computer accounts for the marketing department are in an organizational unit (OU) named Departments MarketingComputers. User accounts for the marketing department are in an OU named DepartmentsMarketingUsers. All of the marketing user accounts are members of a global security group named MarketingUsers. All of the marketing computer accounts are members of a global security group named MarketingComputers. In the domain, you have Group Policy objects (GPOs) as shown in the exhibit. (Click the Exhibit button.)



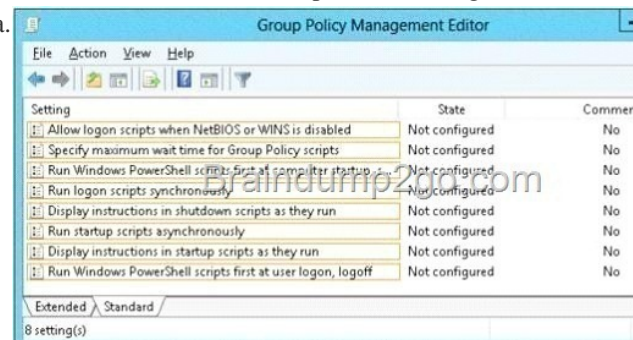
You create two Password Settings objects named PSO1 and PSO2. PSO1 is applied to MarketingUsers. PSO2 is applied to MarketingComputers.

Location	Minimum password length
Default Domain Policy	7
GPO1	5
GPO2	6
PSO1	10
PSO2	12

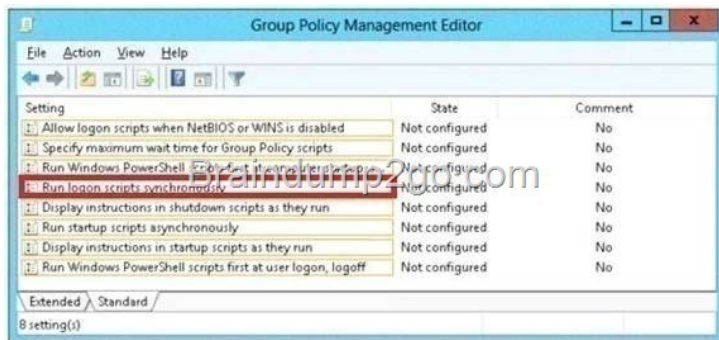
You need to identify the minimum password length required for each marketing user. What should you identify? A. 5B. 6C. 7 D. 10E. 12 Answer: D Explanation: PSO1 is applied to the users so min length is 10 QUESTION 25 Your network contains an Active Directory domain named contoso.com. The domain contains a domain controller named DC1 that runs Windows Server 2012 R2. You have a Group Policy object (GPO) named GPO1 that contains several custom Administrative templates. You need to filter the GPO to display only settings that will be removed from the registry when the GPO falls out of scope. The solution must only display settings that are either enabled or disabled and that have a comment. How should you configure the filter? To answer, select the appropriate options below. Select three.



A. Set Managed to: Yes B. Set Managed to: No C. Set Managed to: Any D. Set Configured to: Yes E. Set Configured to: No F. Set Configured to: Any G. Set Commented to: Yes H. Set Commented to: No I. Set Commented to: Any Answer: AFG Explanation: A: Set Managed to: Yes There are two kinds of Administrative Template policy settings: Managed and Unmanaged. The Group Policy Client service governs Managed policy settings and removes a policy setting when it is no longer within scope of the user or computer. F: Set Configured to: Any We want to display both settings that are enable and disabled. G: Set Commented to: Yes Only settings that are commented should be displayed. Note: Filter with Property Filters The Local Group Policy Editor allows you to change the criteria for displaying Administrative Template policy settings. By default, the editor displays all policy settings, including unmanaged policy settings. However, you can use property filters to change how the Local Group Policy Editor displays Administrative Template policy settings. There are three inclusive property filters that you can use to filter Administrative Templates. These property filters include: Managed Configured Commented QUESTION 26 Your network contains an Active Directory domain named contoso.com. You have several Windows PowerShell scripts that execute when users log on to their client computer. You need to ensure that all of the scripts execute completely before the users can access their desktop. Which setting should you configure? To answer, select the appropriate setting in the answer area.



Answer:



Explanation: <http://technet.microsoft.com/en-us/library/cc958585.aspx> QUESTION 27 Your network contains an Active Directory domain named contoso.com. The domain contains a domain controller named dcl.contoso.com. You discover that the Default Domain Policy Group Policy objects (GPOs) and the Default Domain Controllers Policy GPOs were deleted. You need to recover the Default Domain Policy and the Default Domain Controllers Policy GPOs. What should you run?
A. dcgpofix.exe /target:domain
B. gpfixup.exe /dc:dcl.contoso.com
C. dcgpofix.exe /target:both
D. gptfixup.exe /oldnb:contoso /newnb:dcl

Answer: C Explanation: [http://technet.microsoft.com/en-us/library/hh875588\(v=ws.10\).aspx](http://technet.microsoft.com/en-us/library/hh875588(v=ws.10).aspx) QUESTION 28 Your network contains an Active Directory domain named contoso.com. Domain controllers run either Windows Server 2008, Windows Server 2008 R2, or Windows Server 2012 R2. You have a Password Settings object (PSOs) named PSO1. You need to view the settings of PSO1. Which tool should you use?
A. Group Policy Management
B. Server Manager
C. Get-ADAccountResultantPasswordReplicationPolicy
D. Active Directory Administrative Center
Answer: D Explanation:

[http://technet.microsoft.com/en-us/library/cc770848\(v=ws.10\).aspx](http://technet.microsoft.com/en-us/library/cc770848(v=ws.10).aspx) Incorrect: * Get-ADFineGrainedPasswordPolicy Gets one or more Active Directory fine grained password policies. * To store fine-grained password policies, Windows Server 2008 includes two new object classes in the Active Directory Domain Services (AD DS) schema: Password Settings Container Password Settings The Password Settings Container (PSC) object class is created by default under the System container in the domain. It stores the Password Settings objects (PSOs) for that domain. QUESTION 29 Your network contains an Active Directory domain named contoso.com. The domain contains more than 100 Group Policy objects (GPOs). Currently, there are no enforced GPOs. You need to prevent all of the GPOs at the site level and at the domain level from being applied to users and computers in an organizational unit (OU) named OU1. You want to achieve this goal by using the minimum amount of Administrative effort. What should you use?
A. dcgpofix
B. Get-GPOReport
C. Gpfixup
D. Gpresult
E. Gptedit.msc
F. Import-GPOG
G. Import-GPOH
H. Restore-GPOI
I. Set-GPInheritance
J. Set-GPLink
K. Set-GPPermission
L. Gpupdate
M. Add-ADGroupMember
Answer: I Explanation:

<http://technet.microsoft.com/en-us/library/ee461032.aspx> <http://technet.microsoft.com/en-us/library/cc757050.aspx> QUESTION 30 Your network contains an Active Directory domain named contoso.com. The domain contains more than 100 Group Policy objects (GPOs). Currently, there are no enforced GPOs. You have two GPOs linked to an organizational unit (OU) named OU1. You need to change the precedence order of the GPOs. What should you use?
A. dcgpofix
B. Get-GPOReport
C. Gpfixup
D. Gpresult
E. Gptedit.msc
F. Import-GPOG
G. Restore-GPOH
I. Set-GPInheritance
J. Set-GPLink
K. Set-GPPermission
L. Gpupdate
M. Add-ADGroupMember
Answer: I Explanation: The Set-GPLink cmdlet sets the properties of a GPO link. You can set the following properties: -- Enabled. If the GPO link is enabled, the settings of the GPO are applied when Group Policy is processed for the site, domain or OU. -- Enforced. If the GPO link is enforced, it cannot be blocked at a lower-level (in the Group Policy processing hierarchy) container. -- Order. The order specifies the precedence that the settings of the GPO take over conflicting settings in other GPOs that are linked (and enabled) to the same site, domain, or OU. <http://technet.microsoft.com/en-us/library/ee461022.aspx>

Passing Microsoft 70-411 Exam successfully in a short time! Just using Braindump2go's Latest Microsoft 70-411 Dump
<http://www.braindump2go.com/70-411.html>