

Official 2014 Latest Microsoft 70-410 Exam Dump Free Download(381-390)!

QUESTION 381 Which of the following are the two built-in user accounts created automatically on a computer running Windows Server 2012 R2? A. Network B. Interactive C. Administrator D. Guest Answer: CD Explanation: A. Incorrect: There is no Network account in Windows Server 2012 R2. B. Incorrect: There is no Interactive account in Windows Server 2012 R2. C. Correct: By default, the two built-in user accounts created on a computer running Windows Server 2012 are the Administrator account and the Guest account. D. Correct: By default, the two built-in user accounts created on a computer running Windows Server 2012 are the Administrator account and the Guest account. QUESTION 382 Which of the following is not a type of user account that can be configured in Windows Server 2012 R2? A. local accounts B. domain accounts C. network accounts D. built-in accounts Answer: C Explanation: A. Incorrect: Local accounts can be created and configured in Windows Server 2012 R2. B. Incorrect: Domain accounts can be created and configured in Windows Server 2012 R2. C. Correct: Three types of user accounts can be created and configured in Windows Server 2012: local accounts, domain accounts, and built-in user accounts. D. Incorrect: Built-in accounts can be created and configured in Windows Server 2012 R2. QUESTION 383 Your network contains two servers named Server1 and Server2 that run Windows Server 2012 R2. Server1 and Server2 are part of a workgroup. On Server1 and Server2, you create a local user account named Admin1. You add the account to the local Administrators group. On both servers, Admin1 has the same password. You log on to Server1 as Admin1. You open Computer Management and you connect to Server2. When you attempt to create a scheduled task, view the event logs, and manage the shared folders, you receive Access Denied messages. You need to ensure that you can administer Server2 remotely from Server1 by using Computer Management. What should you configure on Server2? A. From Registry Editor, configure the LocalAccountTokenFilterPolicy registry value. B. From Local Users and Groups, modify the membership of the Remote Management Users group. C. From Server Manager, modify the Remote Management setting. D. From Windows Firewall, modify the Windows Management Instrumentation (WMI) firewall rule. Answer: A Explanation: The LocalAccountTokenFilterPolicy setting affects how administrator credentials are applied to remotely administer the computer. <http://support.microsoft.com/kb/942817> QUESTION 384 Your network contains an Active Directory domain named adatum.com. The domain contains a server named Server1 that runs Windows Server 2012 R2. On a server named Core1, you perform a Server Core Installation of Windows Server 2012 R2. You join Core1 to the adatum.com domain. You need to ensure that you can use Event Viewer on Server1 to view the event logs on Core1. What should you do on Core1? A. Run the Disable NetFirewallRule cmdlet. B. Install Remote Server Administration Tools (RSAT). C. Install Windows Management Framework. D. Run the Enable-C. Answer: D Explanation: Information regarding IPsec policy changes, etc. can be found in the Event Viewer. Thus you need to enable the NetFirewallRule command. This will allow you to view the event logs. QUESTION 385 Your network contains an Active Directory domain named contoso.com. The domain contains a server named Server1. Server1 runs Windows Server 2012 R2 and has the Hyper-V server role installed. On Server1, you create and start a virtual machine named VM1. VM1 is configured as shown in the following table.

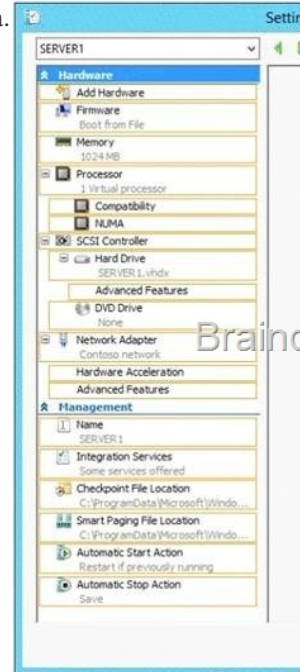
Setting	Configuration
Minimum RAM	2048 MB
Maximum RAM	4096 MB
Disk type	Fixed size
Disk size	100 GB

You need to recommend a solution to minimize the amount of disk space used for the snapshot of VM1. What should you do before you create the snapshot? A. Run the Stop-VM cmdlet. B. Decrease the Minimum RAM. C. Run the Convert-VHD cmdlet. D. Convert disk1.vhd to a dynamically expanding disk. Answer: A Explanation: Original answer is D. But the correct answer is A. The disk configuration (dynamic Vs. fixed) has little impact on the snapshot size. However snapshotting a machine whilst it is running means a RAM dump is also saved to preserve the systems running state at that moment. That requires as much disk space as RAM being used at that time. This is avoided if the machine is shutdown first, reducing the snapshot size by a great deal. QUESTION 386 You have a server named Server1 that runs Windows Server 2012 R2. You try to install the Microsoft .NET Framework 3.5 Features feature on Server1, but the installation fails repeatedly. You need to ensure that the feature can be installed on Server1. What should you do? A. Run the Add-AppxProvisionedPackage cmdlet. B. Disable User Account Control (UAC). C. Connect Server1 to the Internet. D. Remove the .NET Framework 4.5 Features feature. Answer: C QUESTION 387 You have a server named Server1 that runs Windows Server 2012 R2. Server1 has the Hyper-V server role installed. An iSCSI SAN is available on the network. Server1 hosts four virtual machines named VM1, VM2, VM3, and VM4. You create a LUN on the SAN to host the virtual hard drive files for the virtual machines. You need to create a 3-TB virtual hard disk for VM1 on the LUN. The solution must prevent VM1 from

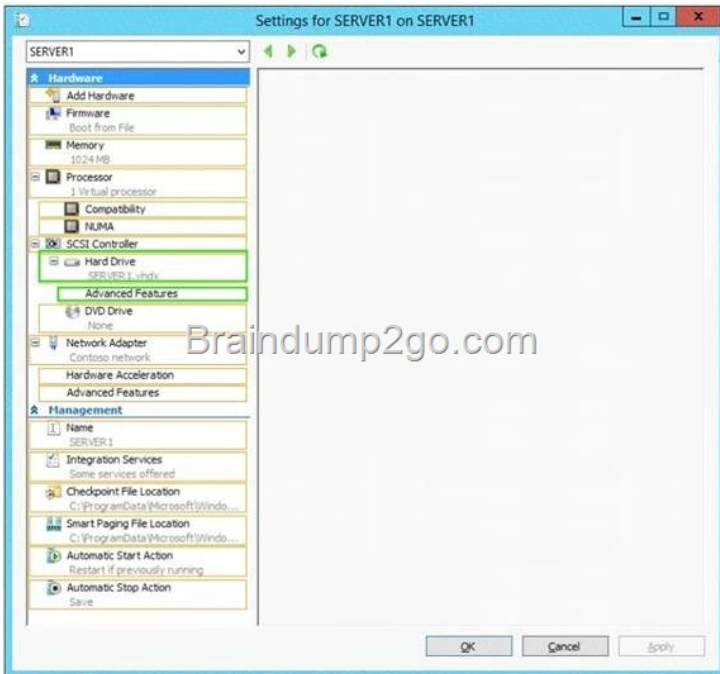
being paused if the LUN runs out of disk space. Which type of virtual hard disk should you create on the LUN? A. Fixed-size VHDX B. Dynamically expanding VHDX C. Fixed-size VHD D. Dynamically expanding VHD Answer: A QUESTION 388 Hotspot Question You have a Hyper-V host named Hyperv1 that runs Windows Server 2012 R2. Hyperv1 hosts a virtual machine named Server1. Server1 uses a disk named Server1.vhdx that is stored locally on Hyperv1. You stop Server1, and then you move Server1.vhdx to an iSCSI target that is located on another server. You need to configure Server1 to meet the following requirements:

- Ensure that Server1 can start by using Server1.vhdx.
- Prevent Server1.vhdx from consuming more than 500 IOPS on the iSCSI target.

Which two objects should you configure? To answer, select the appropriate two objects in the answer area.



Answer:



QUESTION 389 You have a Hyper-V host named Server1 that runs Windows Server 2012 R2. Server1 has the virtual switches listed in the following table.

Virtual switch name	Virtual switch type	Physical network adapter name
vSwitch1	External	NIC1
vSwitch2	External	NIC2

You create a virtual machine named VM1. VM1 has two network adapters. One network adapter connects to vSwitch1. The other network adapter connects to vSwitch2. You configure NIC teaming on VM1. You need to ensure that if a physical NIC fails on Server1, VM1 remains connected to the network. What should you do on Server1? A. Run the Set-VmNetworkAdapter cmdlet. B. Create a new virtual switch on Server1. C. Modify the properties of vSwitch1 and vSwitch2. D. Add a new network adapter to VM1. Answer: A

QUESTION 390 Your network contains an Active Directory domain named adatum.com. The domain contains a member server named Host1. Host1 runs Windows Server 2012 R2 and has the Hyper-V server role installed. Host1 hosts two virtual machines named VM5 and VM6. Both virtual machines connect to a virtual switch named Virtual1. On VM5, you install a network monitoring application named Monitor1. You need to capture all of the inbound and outbound traffic to VM6 by using Monitor1. Which two commands should you run from Windows PowerShell? (Each correct answer presents part of the solution. Choose two.) A. Get-VM "VM6" | Set-VMNetworkAdapter-IovWeight 1 B. Get-VM "VM5" | Set-VMNetworkAdapter -IovWeight 0 C. Get-VM "VM5" | Set-VMNetworkAdapter -PortMirroring Source D. Get-VM "VM6" | Set-VMNetworkAdapter -AllowTeaming On E. Get-VM "VM6" | Set-VMNetworkAdapter -PortMirroring Destination F. Get-VM "VM5" | Set-VMNetworkAdapter -AllowTeaming On Answer: CE

Passing Microsoft 70-410 Exam successfully in a short time! Just using Braindump2go's Latest Microsoft 70-410 Dump: <http://www.braindump2go.com/70-410.html>