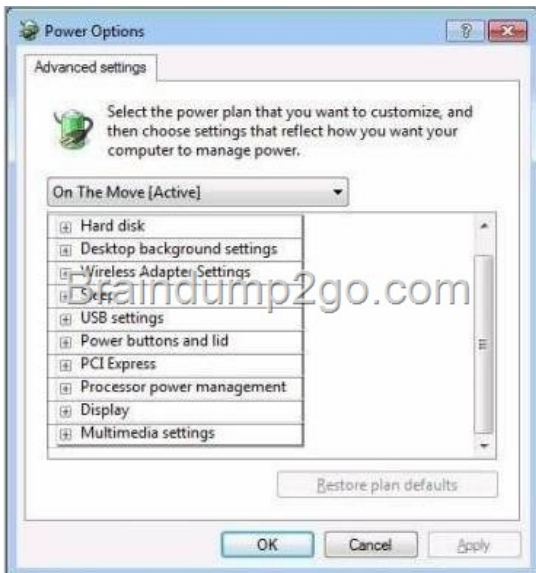


## Official 2014 Latest Microsoft 70-680 Exam Dump Free Download(91-100)!

QUESTION 91 Which of the following must you download from Microsoft's Web site to obtain USMT 4.0? A. Windows Anytime Upgrade B. Windows Upgrade Advisor C. WAIK D. Microsoft Toolkit Answer: C Explanation: User State Migration Tool USMT 4.0 is a command-line utility that allows you to automate the process of user profile migration. The USMT is part of the Windows Automated Installation Kit (WAIK) and is a better tool for performing a large number of profile migrations than Windows Easy Transfer. The USMT can write data to a removable USB storage device or a network share but cannot perform a direct side-by-side migration over the network from the source to the destination computer. The USMT does not support user profile migration using the Windows Easy Transfer cable. USMT migration occurs in two phases, exporting profile data from the source computer using ScanState and importing profile data on the destination computer using LoadState. QUESTION 92 Which Windows Setup configuration pass applies settings to Windows 7 before Windows Welcome starts? A. OobeSystem B. AuditSystem C. Specialize D. OfflineServicing Answer: A QUESTION 93 You require fault tolerance for your operating system so that your computer running Windows 7 Home Premium can still boot up if a disk fails. You have two disks and unallocated space on your second disk. What should you do? A. Create a VHD and install an image of your computer on the VHD. Use BCDEdit to make the VHD bootable. B. Create a RAID-0 volume. C. Create a RAID-1 volume. D. Create a RAID-5 volume. Answer: C QUESTION 94 You have two computers on the same subnet. The computers have the IPv6 addresses shown in the following table:

Computer n
Computer 1
Computer 2

You need to test the connection to the IPv6 address from Computer1 to Computer2. Which command should you run? A. Ping -6 fe80::44df:1b68%12 B. Ping -6 fe80::44df:1b68%10 C. Ping -R fe80::44df:1b68%12 D. Ping -R fe80::44df:1b68%10 Answer: B Explanation: If you are pinging from one host to another using link-local addresses, you also need to include your interface ID, for example ping fe80::39cd:4c93%10. The % character followed by a number after each IPv6 address is the interface ID. If you want to display the configuration of the IPv6 interfaces on the local computer, you can enter netsh interface ipv6 show address. Ping -6 Force using IPv6. QUESTION 95 You have a computer that runs Windows 7. IPv6 is disabled on the computer. The computer has the following IPv4 settings: - IP address: 10.1.1.193 - Subnet mask: 255.255.0.0 - Default gateway: 10.1.1.194 - Preferred DNS server: 10.1.1.195 You need to ensure that the computer can only communicate with computers on the local subnet. What should you do? A. Delete the default gateway address. B. Delete the preferred DNS server IP address. C. Configure the subnet mask to use 255.255.255.0. D. Configure the subnet mask to use 255.255.255.192. Answer: A Explanation: Why gateways work Default gateways are important to make IP routing work efficiently. In most cases, the router that acts as the default gateway for TCP/IP hosts--either a dedicated router or a computer that connects two or more network segments--maintains knowledge of other networks in the larger network and how to reach them. TCP/IP hosts rely on default gateways for most of their communication needs with hosts on remote network segments. In this way, individual hosts are freed of the burden of having to maintain extensive and continuously updated knowledge about individual remote IP network segments. Only the router that acts as the default gateway needs to maintain this level of routing knowledge to reach other remote network segments in the larger internet network. If the default gateway fails, communication beyond the local network segment may be impaired. To prevent this, you can use the Advanced TCP/IP Settings dialog box (in Network Connections) for each connection to specify multiple default gateways. You can also use the route command to manually add routes to the routing table for heavily used hosts or networks. QUESTION 96 You are running Windows 7 on a portable computer. A custom power plan named "On The Move" is optimized for battery life. The computer remains running when the portable computer is closed. You need to change a setting so that when you close the portable computer, it enters sleep mode. Which setting should you change? (To answer, select the appropriate setting in the work area.)



Answer:

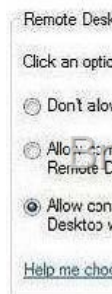


QUESTION 97 You have a computer that runs Windows 7. You need to modify the file extensions that are associated to Internet Explorer. What should you do? A. From Internet Explorer, click Tools and then click Manage Add-ons. B. From Control Panel, open Default Programs and then click Set Associations. C. From the local Group Policy, expand Computer Configuration and then click Software Settings. D. From Window Explorer, right-click %programfiles%\Internet Explorer\iexplore.exe and then click Properties. Answer: B QUESTION 98 You have a computer that runs Windows 7. You run Ipconfig as shown in the exhibit. (Click the Exhibit button.) You need to ensure that you can establish a DirectAccess connection to the network. What should you do first?



A. Create a new VPN connection. B. Configure a static IPv4 address. C. Enable IPv6 on the network adapter. D. Add an

additional default gateway address. Answer: C QUESTION 99 You have a computer that runs Windows 7. You discover that an application named App1 runs during the startup process. You need to prevent only App1 from running during startup. Users must be allowed to run App1 manually. What should you do? A. From the local Group Policy, modify the application control policy. B. From the local Group Policy, modify the software restriction policy. C. From the System Configuration tool, select Diagnostic Startup. D. From the System Configuration tool, modify the Startup applications. Answer: D QUESTION 100 You are in charge of two computers that are respectively named Computer1 and Computer2. Computer1 runs Windows 7 and Computer2 runs Windows XP Professional. On Computer1, you enable Remote Desktop as shown in the Remote Desktop exhibit. (Click the Exhibit button.)



Later you log on to Computer2 and try to connect to Computer1 by using Remote Desktop. The connection fails and you receive the error message shown in the Remote Desktop Disconnected exhibit. (Click the Exhibit button.)



You need to ensure, that you can connect to Computer1 by using Remote Desktop. What action should you perform? A. On Computer1, enable the Allow connections from computers running any version of Remote Desktop setting. B. On Computer2, assign the Client (Respond Only) IPSec policy. C. On Computer1, add your user account to the Remote Desktop Users group. D. On Computer2, create a firewall exception for the Remote Desktop Protocol (RDP). Answer: A Passing Microsoft 70-680 Exam successfully in a short time! Just using Braindump2go's Latest Microsoft 70-680 Dump:

<http://www.braindump2go.com/70-680.html>